

CRANE WATCH

Commercial Real Estate

West Bradenton community to develop nearly 400 new lots



Tucked along the shores of Lake Flores, the resident-only amenity, The Garden Club, will be the social hub for those who call SeaFlower home.

LAKE FLORES LAND CO.



By **Madalyn Blair** – Reporter, Tampa Bay Business Journal
Jan 28, 2026

The next phase of development is underway at SeaFlower, a master-planned community in West Bradenton.

Lake Flores Land Co., the developer behind the master-planned community, is working on the next phase of home construction within its initial phase one at SeaFlower. This phase will encompass 400 acres of the [land's 1,175-acre site](#). The community is bordered by Cortez Road West on the north, 75th Street West to the east and 86th Street to the West.

There are 400 completed lots, and an additional 384 lots are now under development and expected to be completed throughout the year, the developer confirmed to the Tampa Bay Business Journal.

In its entirety, phase one includes:

- 1,063 residential units
- 600 apartment units
- 120-key hotel
- 140,000 square feet of office space

At completion, SeaFlower will have 4,000 single-family homes, 600 apartments, 250 hotel keys and 350,000 square feet of retail and office space. [Publix Super Markets Inc.](#) will open at [SeaFlower Village Center](#) – a retail village within the community – later this fall, a release said.



SeaFlower aerial view

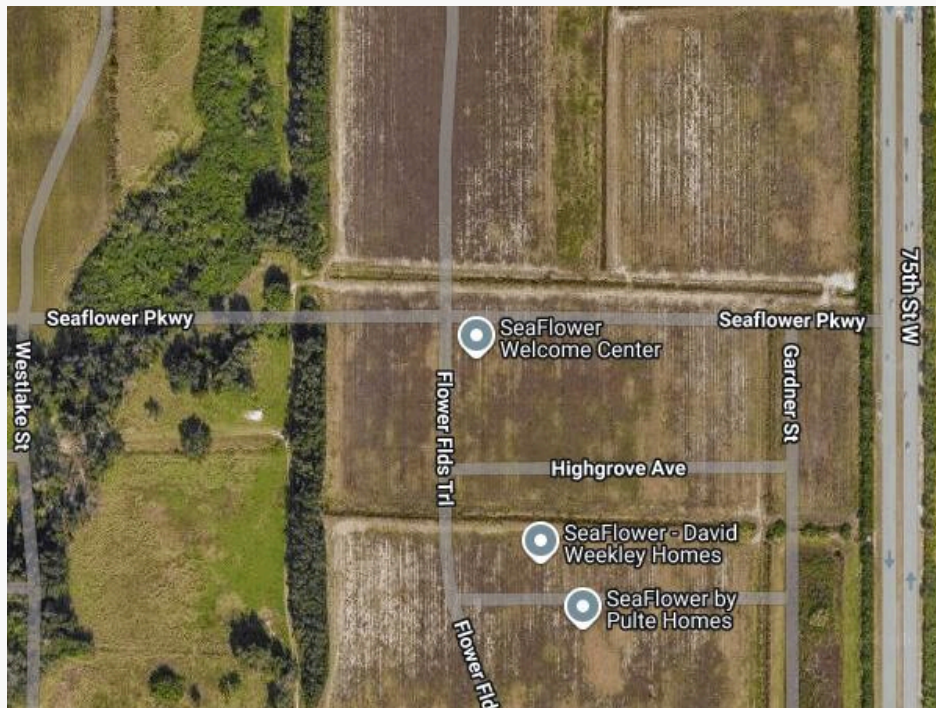
LAKE FLORES LAND CO.

Cardel Homes, David Weekley Homes, Issa Homes, M/I Homes and Pulte Homes will build the single-family residences in SeaFlower.

At the beginning of March, SeaFlower will debut its model homes by M/I Homes and Issa Homes, and later this year, the community will open three fully-furnished showcase homes in addition to the nine that opened in fall 2025. Amenities include a garden club, fitness center, gathering hall, resort-style pool, event lawn and amphitheater, play area, pickleball courts, community fire pit, lakes, parks and trails.

ZNS Engineering is also a part of the development team.

The next phase of development for the community comes as demand continues along the area's coastal growth corridor, the release stated. Between 2010 and 2020, Manatee County's population grew by 23% to nearly 400,000. From 2020 to 2023, the county grew by another 10%.



[THE LIST](#)
Link to Story